

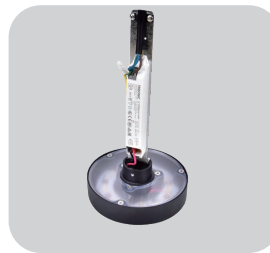
DLW-LED-032



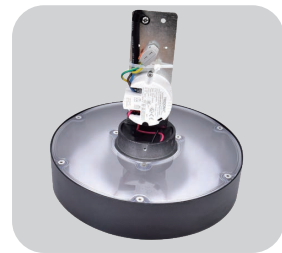
Base



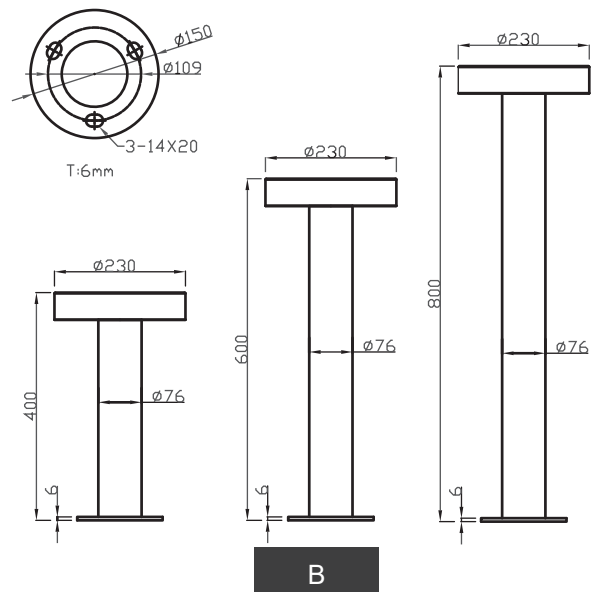
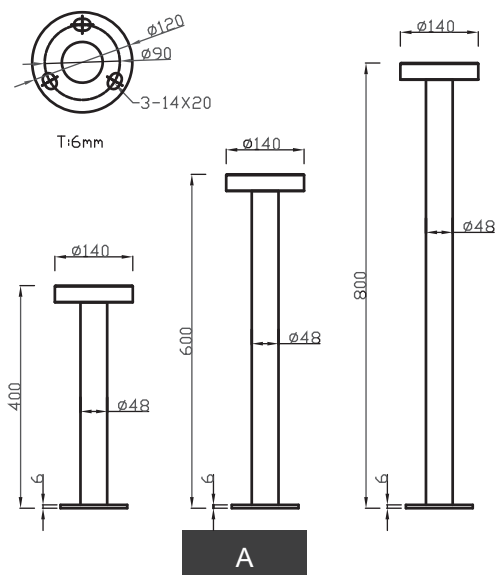
Injection PC diffuser



Head A



Head B



Application:



Walkways



Parks / Gardens



Car parks



Prestigious

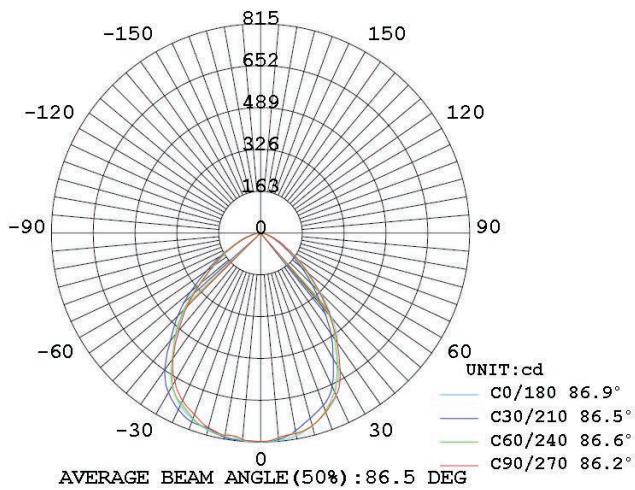


Retail



Amenity

Distribution:



Features:

- Main body is made of Die-casting aluminum alloy with Extruded aluminum alloy.
- Main body is made of Die-casting aluminum alloy with Extruded aluminum alloy.
- The diffuser is a frosted anti-UV polycarbonate for high efficiency and vandal resistance.
- Lumileds 2835 led chip and Tridonic driver.
- Easy access to LED and driver via a removable head.
- 2700-6500K color temperature options.
- Tamper proof fixings for increased vandal resistance.
- Anti-UV electrostatic powder spraying, regular color: Black, Silver, RAL7043, RAL7016
- IP65 rating water and rust proof protection.
- IK08 rating housing protection.
- Warranty is 3-5 years.

Specification:

| Item No. | LED | Lumens | Wattage | CCT | CRI |
|------------------|---------------|--------|---------|------------|-----|
| DLW-LED-032A-10W | Lumileds 2835 | 663Lm | 10W | 2700-6500K | ≥80 |
| DLW-LED-032B-10W | Lumileds 2835 | 811Lm | 10W | 2700-6500K | ≥80 |
| DLW-LED-032B-14W | Lumileds 2835 | 1091Lm | 14W | 2700-6500K | ≥80 |
| DLW-LED-032B-20W | Lumileds 2835 | 1498Lm | 20W | 2700-6500K | ≥80 |
| DLW-LED-032B-24W | Lumileds 2835 | 1753Lm | 24W | 2700-6500K | ≥80 |
| DLW-LED-032B-30W | Lumileds 2835 | 2091Lm | 30W | 2700-6500K | ≥80 |